



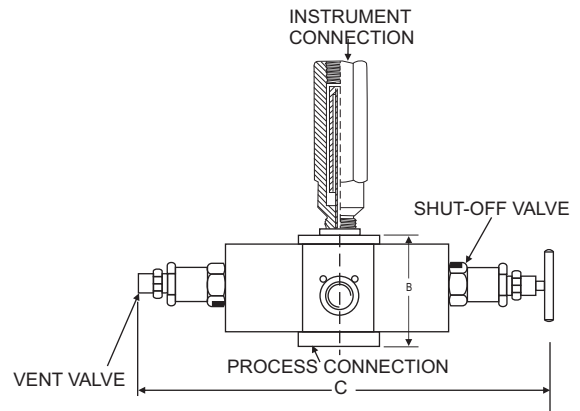
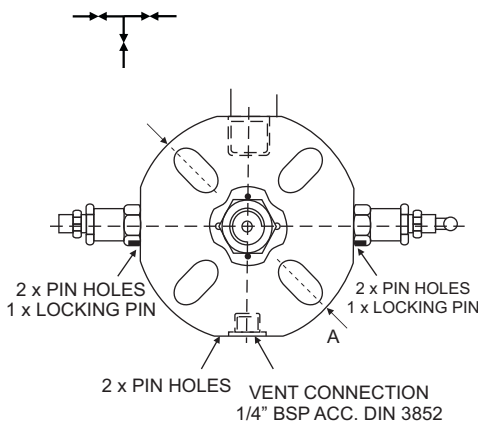
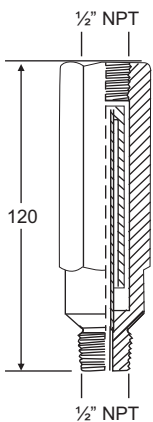
Monoflange Double Block and Bleed Valve with needle type pattern valve with non rotating spindle tip for positive bubble tight shut off function. Inlet 150/600# Flange, outlet NPT or BSP rotatable. Vent/test connection NPT female, isolating bonnet at front & right side and venting bonnet at left - instrument connection on top or side (multifunctional). It is supplied with INLET below mention Flange sizes.

Standard Connection

- Dimensions in mm.
- Monoflange Valves offer a compact alternative to traditional multi-valve assemblies, reducing weight, cost and the number of potential leak paths.
- PTFE or Graphoil Stem Seal.
- Outlet/Drain Screwed NPT - BSPP - BSPT.
- Inlet Flanged RF or RTJ.
- Material available : SS304, SS316, Carbon Steel, Monel 400, Monel 500
- Other materials on request.

Monoflange double block and bleed valve (Flanged x Screwed)

| SIZE | 150LB | | | 300LB | | | 600LB | | | 900/1500LB | | | 2500LB | | |
|-------|-------|----|-----|-------|----|-----|-------|----|-----|------------|----|-----|--------|----|-----|
| | A | B | C | A | B | C | A | B | C | A | B | C | A | B | C |
| 1/2 | 95 | 45 | 205 | 95 | 45 | 205 | 95 | 50 | 205 | 121 | 50 | 231 | 133 | 50 | 243 |
| 3/4 | 98 | 45 | 205 | 117 | 45 | 227 | 117 | 50 | 227 | 130 | 50 | 240 | 140 | 50 | 250 |
| 1 | 108 | 45 | 218 | 124 | 45 | 234 | 124 | 50 | 234 | 149 | 50 | 259 | 159 | 50 | 269 |
| 1.1/2 | 127 | 50 | 237 | 156 | 50 | 266 | 156 | 55 | 266 | 178 | 55 | 288 | 203 | 55 | 313 |
| 2 | 152 | 50 | 262 | 165 | 50 | 275 | 165 | 60 | 275 | 216 | 60 | 326 | 235 | 60 | 345 |



Notes : • Drawings are not to scale. • All Dimensions are in mm.
For Further details please contact factory